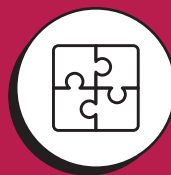




One-course  
per-month



International  
Expert Faculty



Combined  
Degree Option



Specialization  
Certificates

# WELCOME TO SCHILLER INTERNATIONAL UNIVERSITY




In 1964, we became the first established American University in Europe. Today we continue to push the boundaries of innovation with our educational concept aimed at understanding that living in a global world requires a **Global Mindset**.

We provide students with a **Real Global Learning Experience** on our **four International Campuses**.

## DISCOVER OUR PROGRAMS



### BACHELOR'S DEGREES

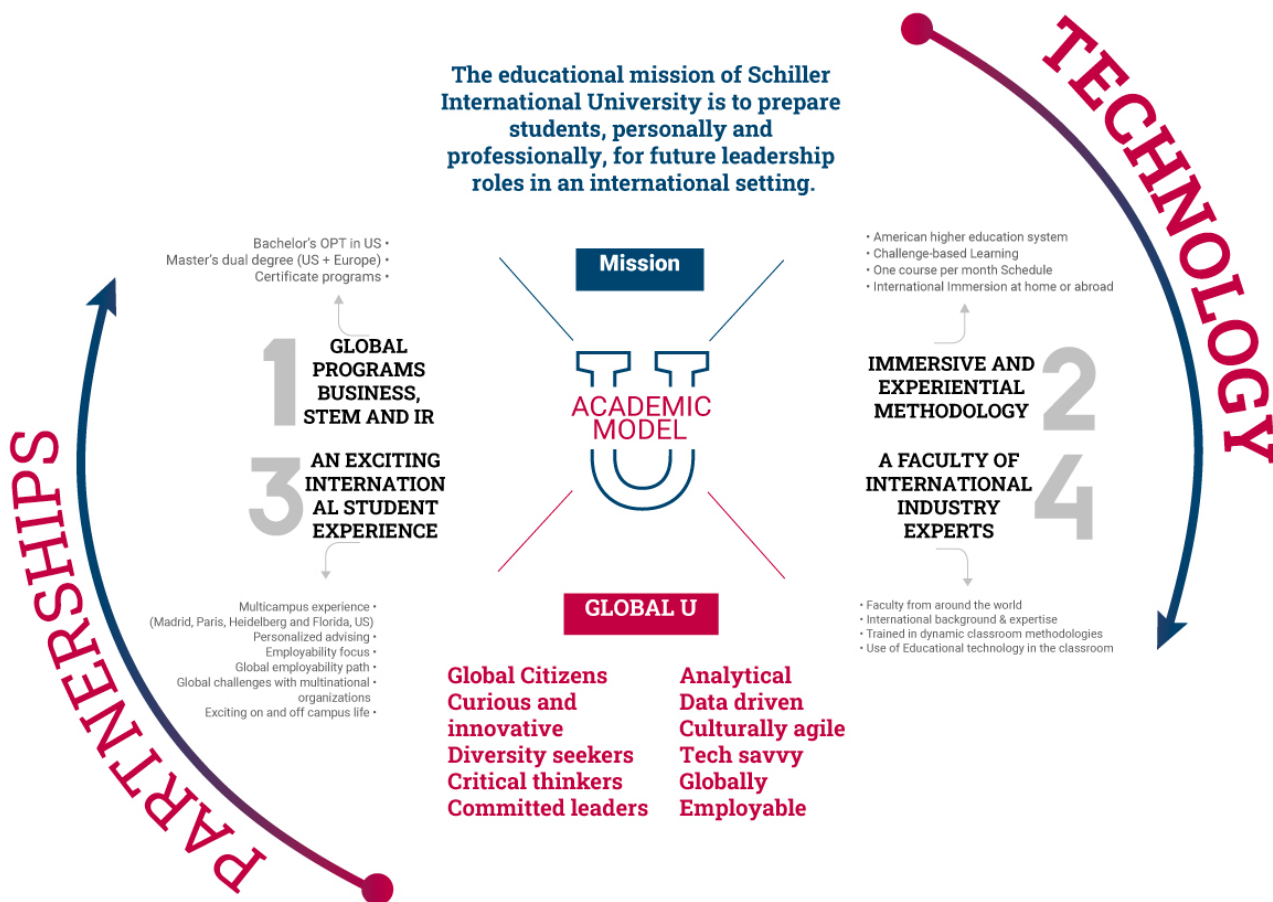
-  **International Business**
-  **International Marketing**
-  **Computer Science**
-  **International Hospitality and Tourism Management**
-  **International Relations and Diplomacy**
-  **Applied Mathematics and AI**
-  **Business Analytics**

### MASTER'S DEGREES

-  **MBA**
-  **MBA in International Business**
-  **International Relations and Diplomacy**
-  **MS in Data Science**
-  **MS in Digital Marketing and Ecommerce**
-  **MS in Sustainability Management**
-  **MS in Global Finance**

# A UNIQUE LEARNING MODEL

The educational mission of Schiller International University is to prepare students, personally and professionally, for future leadership roles in an international setting.



## PLAN YOUR FUTURE WITH OUR GLOBAL EMPLOYABILITY PATH

With our **Real Global Learning Experience**, we provide training activities to improve your employability with knowledge and soft skills to become a **Smart Global Professional**.

From day one, we connect you directly with international professionals, leading companies, and organizations, paving the way for your **Global Employability Path**.



# LEARNING BY LIVING A GLOBAL EXPERIENCE

Study at our different locations to learn about diversity, explore potential career opportunities and establish a Global Mindset.



TAMPA, FL  
USA



MADRID  
Spain



HEIDELBERG  
Germany



PARIS  
France




**ACCREDITED\*  
DUAL DEGREES**  
(US AND EUROPE)

Start developing your international career and benefit from our multiple global recognitions.

\*Accredited member ACCSC



**EXPERIENTIAL  
LEARNING**

Master the fundamentals and apply knowledge to different international realities from within.



**FLEXIBILITY**

Plan, lead, and develop your educational journey step-by-step based on your interests.



**GLOBAL  
EMPLOYABILITY  
ORIENTED**

Develop interdisciplinary career skills and connect with the business community.

## APPLY NOW!

[SCHILLER.EDU](https://www.schiller.edu)

### TAMPA CAMPUS

admissions@schiller.edu / +1 855 787-2262



### PARIS CAMPUS

paris\_admissions@schiller.edu / +33 1 4538 5601



### MADRID CAMPUS

mad\_admissions@schiller.edu / +34 91 448 2488



### HEIDELBERG CAMPUS

hei\_admissions@schiller.edu / +49 6221 45810

